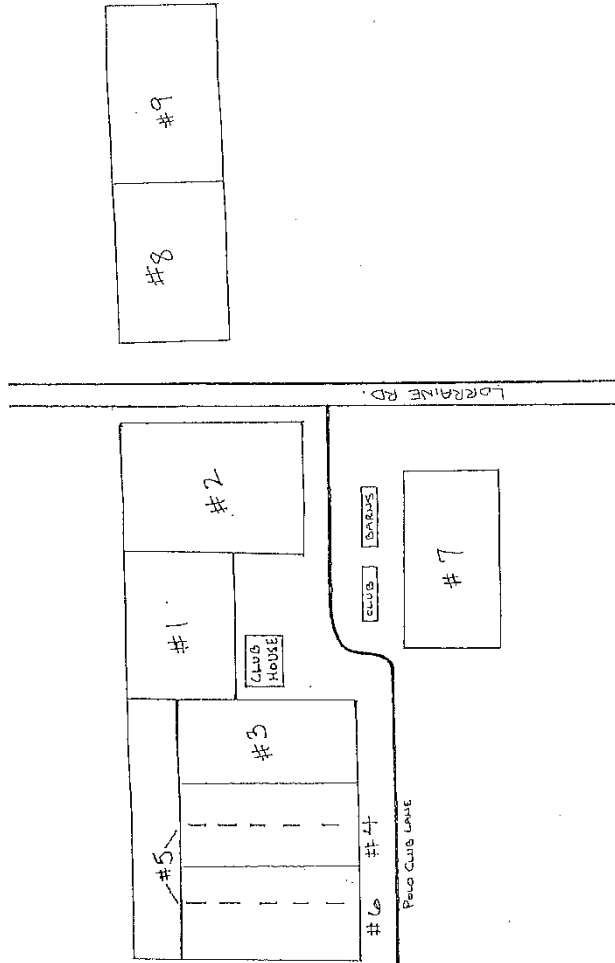


## Riding Areas

# Polo Fields



**SARASOTA POLO CLUB**  
**8201 Polo Club Lane**  
**Sarasota, Florida 34240**

Please read and be familiar with all Club rules and regulations. The Club reserves the right to make final decisions on matters addressed in this manual. Playing privileges may be suspended and membership revoked at the Club's discretion. No refunds or pro-rations will be allowed.

Main Line	(941) 907-0000
Fax Line	(941) 757-5262
Information Line	(941) 953-TIME
Arena Information Line	(941) 953-8444
Web site	www.sarasotapolo.com

**Robin Uihlein** - President  
 ruihlein@aol.com

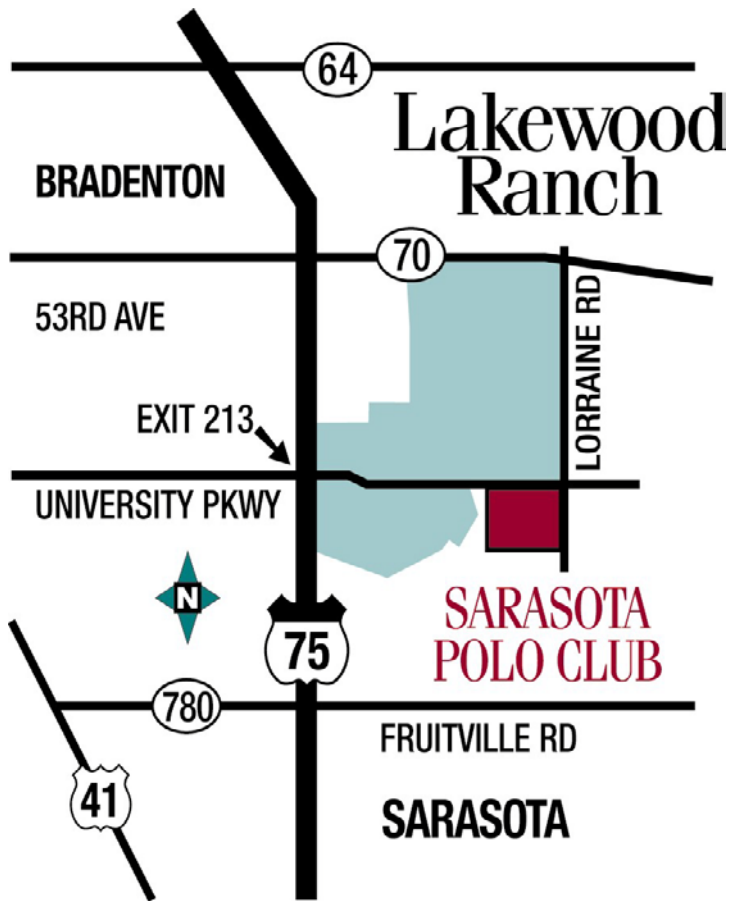
**Maggie Mitchell** - Club Manager  
 maggie.mitchell@sarasotapolo.com

**Maryellen Paterson** - Events Manager  
 maryellen.paterson@sarasotapolo.com

**Tamara Harris** - Office Administrator  
 tammy.harris@sarasotapolo.com

The following committees will advise and assist in polo planning and administration.

- **Disciplinary/Safety Committee:** Dana Aschinger, Maggie Mitchell, Horacio Onetto, Larry Robinson, Robin Uihlein
- **Membership Committee:** Maggie Mitchell, Robin Uihlein
- **Handicap/Tournament Committee:** George Alexander, Scott Lancaster, Juan Martinez-Baez, Jamie Mirikitani, Jack Shelton, Robin Uihlein
- **Arena Handicap Sub-Committee:** George Alexander, Scott Lancaster
- **Umpire Committee:** George Alexander, Maggie Mitchell, Robin Uihlein



**Arena Fees / Season of 2010**

**Lessons**

Lesson (horse provided)	\$ 85 / hr
Lesson Package*	\$ 400 / pkg of 5
*Lesson package for first time students only	

**Practices / Tuesdays, Thursdays & Saturdays**

Per Session	2 chukkers	\$ 25
Fall	October – December	\$500
Winter	January – March	\$600
Spring	April – June	\$500
Full Membership	October – June	\$1,260

**Leagues & Tournaments**

- U.S.P.A. Congressional Cup (3 – 6 Goal) – Dates: TBD
- U.S.P.A. Tournaments – Dates: TBD
- Arena Leagues – Dates: TBD

## GOODS & SERVICES

### CHIROPRACTIC

Dr. Mark D'Amato 927-7009

### FEED STORE

Stockyard 371-6591

### HOTELS

Lakewood Ranch Holiday Inn\* 782-4404

*\*Ask for special polo rate*

Sleep Inn & Suites Riverfront 721-4933

The Ritz-Carlton, Sarasota 309-2000

Wingate by Wyndham 755-0055

### PHOTOGRAPHER

Eric Nalpas 685-3086

### TACK & EQUIPMENT

The Tackeria (800) 882-7656

Texas Polo (800) 527-1418

Gray's (877) GRY-POLO

### VETERINARIANS

Sarasota Equine Clinic 907- 1147

Braden River Equine 926 - 8985

## TABLE OF CONTENTS

GENERAL INFORMATION.....	4
POLO RULES.....	6
PLAYERS.....	6
PLAYER CONDUCT.....	7
UMPIRES.....	7
LEAGUE & TOURNAMENT PLAY.....	8
SUBSTITUTIONS.....	9
PRACTICE.....	9
USE OF FACILITY.....	10
CLUBHOUSE / PAVILION.....	11
DOGS.....	11
MEMBERSHIP & INSURANCE.....	12
BARN RULES.....	12
RIDING RULES.....	13
POLO FEES.....	14
LEAGUE & TOURNAMENT SCHEDULE.....	15
GOODS & SERVICES .....	18
ARENA POLO.....	19
POLO FIELD MAP.....	20
RIDING AREA MAP.....	21



## GENERAL INFORMATION

- The Club is operational during the winter season and offers a polo program to members owning property in Sarasota Polo Ranches and a limited number of outside memberships. **Membership is subject to the approval of the Membership Committee.**
- The Club has established a set of rules and code of ethics which members should acquaint themselves, as set forth in this manual.
- The Club offers five membership categories to approved members that include:
  - Full Playing Member
  - Practice Only Member
  - Polo Ranch Owner Member
  - Season Tailgate Member
  - Arena Member
- In the event that a sponsored professional player employed by a member is suspended from play, the Club specifically disavows any responsibility for any cost, direct or otherwise, incurred by the player or the member sponsoring or employing said player.
- Sarasota Polo Club will have certain committees to assist the polo manager. The rulings of the polo manager are final on all matters.
- The polo manager develops a season program of league and tournament games. These schedules are posted on the Club bulletin board, available at the Polo Office and on the website.

### **0 - 4 GOAL U.S.P.A. SPORTSMANSHIP CUP\*\***

- Entry Fee \$1,250.00 per team
- Team Entry / Draw – March 10, 2010
- League Format
- Dates: March 13,20,27, April 3

### **8 - 12 GOAL U.S.P.A. NATIONAL INTER-CIRCUIT CHAMPIONSHIP\***

- Entry Fee: \$850.00 per team
- Team Entry / Draw - March 13, 2010
- Single Elimination
- Dates: March 17-21

### **10 - 14 GOAL ROBERT UIHLEIN, JR. MEMORIAL \*\*\***

- Entry fee: \$1,600.00 per team
- Team Entry / Draw - March 20, 2010
- Single Elimination
- Dates: March 24-28

### **10 - 14 GOAL U.S.P.A. REGIONAL CLASSIC-SOUTHEAST\***

- Entry Fee: \$850.00 per team
- Team Entry / Draw - March 27, 2010
- Single Elimination
- Dates March 31- April 4

### **2 - 6 GOAL RINGLING CUP\*\***

- Entry Fee: \$850.00 per team
- Team Entry/Draw: April 2,2010
- Single Elimination
- Dates: April 6 -11

\* U.S.P.A. National Outdoor Event

\*\* U.S.P.A. Sanctioned Event

\*\*\* U.S.P.A. Circuit Outdoor Event

#### **4 - 8 GOAL FRIDAY LEAGUE\***

- Entry Fee: \$1250.00 per team
- Team Entry / Draw - January 30, 2010
- Dates: February 5,12,19,26

#### **SUNDAY GULF COAST LEAGUE\***

- Entry Fee: \$1250.00 per team
- Team Entry / Draw - January 30, 2010
- Dates: February 7,14,21,28

\*Please note that we will resume the Friday & Sunday 8-12 Goal February Leagues if there is a minimum of four teams interested for each league

## **TOURNAMENTS**

### **SMR CUP (Cowboys & Polo Players)**

- Entry Fee: N/A
- Events: Fishing, Shooting, Roping, Penning, Polo, Horse Race
- Entry Date/Draw January 26, 2010
- Dates: January 29 – 31

### **U.S.P.A. / P.T.F. SENIOR'S TOURNAMENT\*\*\***

- \$300.00 per player (\$150 to the SPC and \$150 tax deductible fee to the PTF)
- League Format / 4 chukkers
- Team Entry / Draw – March 3, 2010
- Dates: March 6- 7

### **4 - 8 GOAL WAYNE BROWN TOURNAMENT\*\***

- Entry Fee: \$850.00 per team
- Team Entry / Draw – March 3, 2010
- Single Elimination
- Dates: March 7-14

### **4 - 8 GOAL U.S.P.A. REGIONAL PRESIDENT'S CUP\***

- Entry Fee: \$1,250.00 per team
- Team Entry / Draw – February 27, 2010
- League Format
- Date: March 2,9,16,23

\*Winning team will earn a slot in the U.S.P.A. National President's Cup played at International Polo Club, Wellington, FL.

- The Club sets dues for the polo season. The dues are reviewed and adjusted annually. Proceeds are used to operate the club, maintain the fields and improve the facility.
- **In order to protect paying members, the Club does require that dues and fees be paid before playing.**
- There is a charge for leagues and tournaments, which pays for EMTs, umpires and flaggers. EMTs are present at all practice, league and tournament games.
- The Club has facilities available for the members including the clubhouse, stables, paddocks, fields, arena, exercise track, practice areas and bridle paths. Some or all of these may not be available outside the polo season.
- The Club encourages members to take advantage of the clubhouse, and in particular tries to promote social events throughout the season.
- The annual Polo Ball will be held on Friday, March 26, 2010 at The Lake Club at Lakewood Ranch.

## **VEHICLES**

- The posted speed limit for cars is **30 m.p.h.**
- Trailers must park south of the clubhouse adjacent to Field #3 for all Sunday 1:00 pm games.
- Be extra cautious at bridle path crossings; horses have the right of way!
- Do not drive vehicles on the bridle paths.
- Do not park trailers on the grass area south of fields 3-6.
- No vehicles other than the paramedic and photographer are allowed on the fields.

## POLO RULES

The Sarasota Polo Club is a private Club run for the members under the rules and guidelines of the U.S.P.A.

Any violation of the Club rules and regulations or failure to comply with the decisions of the polo manager or the Disciplinary Committee may result in a warning, fine, suspension, expulsion, or any combination thereof.

The type of action taken for a general rules and regulation violation is left to the sole discretion of the polo manager and/or the Disciplinary Committee.

### PLAYERS

All players at the Sarasota Polo Club must be members of the United States Polo Association and have been assigned a current handicap prior to any league or tournament event. It is the responsibility of team captains or patrons to be sure that all team players are currently registered with the United States Polo Association.

All players and officials for all league and tournament games must wear white pants, and boots.

No player shall play in any event for more than one team.

The aggregate handicap of a team must fall within the limits specified for an event. A team whose handicap is higher or lower than the specified limits shall not be permitted to participate.

A player with a handicap of "B" (-1) may not play above the 8 goal level. There shall be no more than one "B" (-1) rated player per team in any event of 4 goals or above. A player with a handicap of "C" (-2) or "N" (Novice) may not play in any USPA events, club leagues or tournaments.

## 2010 LEAGUE & TOURNAMENT SCHEDULE

### JANUARY LEAGUES

#### **CLUB POLO SATURDAY LEAGUE**

- Entry Fee: \$650 per player
- Individual Entry - December 30, 2009
- Dates: January 9,16,23,30

#### **6 - 8 GOAL WEDNESDAY LEAGUE**

- Entry Fee: \$1250.00 per team
- Team Entry / Draw December 30, 2009
- Dates: January 6,13,20,27

#### **6 - 8 GOAL FRIDAY LEAGUE**

- Entry Fee: \$1250.00 per team
- Team Entry / Draw December 30, 2009
- Dates: January 8,15,22,29

#### **8 -10 GOAL SUNDAY LEAGUE**

- Entry Fee: \$1250.00
- Team Entry / Draw December 30, 2009
- Dates: January 3,10,17,24

### FEBRUARY LEAGUES

#### **CLUB POLO SATURDAY LEAGUE**

- Entry Fee: TBD
- Individual Entry – January 30, 2010
- Dates: February 6,13,20,27

#### **6 - 8 GOAL WEDNESDAY LEAGUE**

- Entry Fee: \$1250.00 per team
- Team Entry / Draw - January 30, 2010
- Dates: February 3,10,17,24

## 2010 POLO FEES

### GROUNDS FEES

Full Playing Member	\$7,840 / season
Polo Ranch Owner/Full playing	\$6,770 / annual
Practice Only Member	\$4,095 / season

A non-playing Polo Ranch owner will receive a 50% discount for one full playing member **stabled** on property. **In order to obtain this discount you must have a player stabled on your property before January 1, 2010.**

**\*All player substitutions must be approved by the Club Manager.**

*A \$350 administration fee and  
7% state sales tax is included in the price.*

***Please remember:  
"PAY BEFORE PLAY"***

### STABLING FEES

Season: November 1, 2009 – April 30, 2010

Stall/Tack Room/Paddock	\$500 / season
	\$240 / month
	\$ 10 / night

**In order to reserve stalls for the season, a 20% non-refundable deposit is required.**

### OTHER GROUNDS FEES

Individual Guest Fee	\$ 50 / chukker
Seasonal Stick and Ball Fee	\$ 2,675 / Nov - April
*Annual Boarders Fee	\$ 3,210 / Jan - Dec
*Seasonal Facility Use	\$1,500 / Dec - April

*\*Use of track and trails only*

*7% state sales tax is included in the price.*

*Subject to availability and invitation.*

**All fees are non-transferable**

### PLAYER CONDUCT

- The Disciplinary Committee will enforce the rules of sportsmanship and conduct on the playing field.
- Captains ONLY are permitted to communicate with the umpires during the game.
- Any arguing, profanity, disrespectful conduct, rough or dangerous plays, refusing to play, or any other lack of sportsmanship will not be tolerated. VIOLATORS WILL BE SERIOUSLY PENALIZED.
- Any fines levied by the Disciplinary Committee must be paid prior to further play by the violator.
- Unsportsmanlike conduct\* and profane language on or off the playing field will not be tolerated. Membership rights may be rescinded for any player in violation of this provision.

*\*Unsportsmanlike conduct:* includes but is not limited to conduct, including actions or words, directed to any official, player, spectator, or other person or mount on Club grounds that is physically or verbally threatening, assaulting, abusive, demeaning, obscene, profane, belligerent, dangerous or that violates standards of fair play or common decency generally accepted in the polo community.

### UMPIRES

There will be regular umpire meetings, which are **mandatory** for club umpires.

- It is the players' responsibility to check the board or information line to see if they are scheduled to referee or umpire.
- The referee (third man) should not talk with others while the game is in progress.

- Umpires may send off any horse found to be lame, out of control and/or dangerous.
- It is the Umpires' responsibility to report any unsportsmanlike conduct and the circumstances surrounding it to the polo manager as soon as possible.
- Umpires have the exclusive authority over the entire game and are charged with responsibly executing their duties.
- Umpires must be present 15 minutes prior to game time and are responsible for having suitable mounts.
- The final decision of canceling a game in progress, due to weather, shall be determined by the game officials and/or tournament officials.
- The team captains may be consulted, but the game and tournament officials shall make the official decision.

## LEAGUE & TOURNAMENT PLAY

- U.S.P.A. Rules and Regulations will govern all tournaments and leagues, unless otherwise noted. All players are responsible for reading and understanding all U.S.P.A. and Club rules. The Tournament Committee has authority to revise and make rule decisions.
- The draw procedure and playing format will be decided by the polo manager and not by the captains of the teams entered. Entry forms must be complete and entry fees paid in full prior to the draw. A team that withdraws from an event after the draw shall forfeit all fees and be subject to additional fines and/or suspension from the next event.
- Leagues and tournaments must be completed by the scheduled dates, weather permitting.

## RIDING RULES

Horses may be exercised in specified areas only. The following rules apply:

- Stay within polo club premises.
  - Absolutely no trespassing in mining areas or south of Whiskey Pond Lane.
  - Ride to the side of the road or on the bridle paths; do not cut across the polo fields.
  - **Maximum of four horses to a set.**
  - **DO NOT TIE HORSES TOGETHER!**
  - Members shall take every precaution to ensure the safety of people and horses at all times.
  - The polo manager has full authority to prohibit anyone from riding on the premises if the person does not possess adequate riding skills.
  - **There will be no exercising, schooling or general riding on or around polo fields or stick and ball areas.**
  - NO stick and balling on edges of fields during or after practices.
  - No grooms or guests are allowed on the **Members Only** stick and ball fields.

**Any non-member found stick and balling on member fields will be charged a \$2,675 stick and ball fee for the season.**

## MEMBERSHIP & INSURANCE

Sarasota Polo Club is a private club, which reserves the right to accept or refuse members at the discretion of the Membership Committee.

- The membership season is November 1 – April 30, 2010.
- A membership application must be filled out and submitted to the Club. All applications will be addressed within two weeks of receipt.
- Owners of the Polo Ranches must maintain a full paid annual membership. Property owners are solely responsible for manure removal and the club will not bill lessees for this service.
- All player membership dues are subject to a 7% sales tax, which will be collected for the State of Florida.
- **Everyone riding on club property must come to the office and sign a waiver at the start of each season.**
- Members should carry medical insurance for themselves, their grooms and sponsored players.

## BARN RULES

- **NO SMOKING** allowed in barns.
- Please put all trash in the proper containers.
- Barn and paddock areas should be kept clean.
- Use assigned paddocks only. Two horse maximum per paddock.
- Notify the polo office of problems or repairs as soon as possible.
- Please turn off any lights when not in use.
- **Do not tie horses to trees in barn area or at fields.**
- Dump manure in designated areas only. Please do not throw wire, bottles, cans or trash in with manure.
- Park all trailers and other vehicles in designated areas. Do not block road.
- **No parking on grass in the barn area.**
- Check with the polo office before adding any construction materials to stalls, tack-rooms, paddocks or sheds.

- Teams must play all of their league and tournament games regardless of their win/loss records so as not to unduly influence the rankings of remaining teams in the same tournament. Any team that withdraws without the approval of the Tournament Committee will be subject to severe fines and suspensions from future events.

## SUBSTITUTIONS

- Any time a substitution is to occur, the polo manager must be notified in advance and the person substituting must be a current U.S.P.A. member and sign a release.
- Should a Full Playing Member be unable to play a league or tournament game, the player may substitute a qualified U.S.P.A. player from outside the Club roster to take their place. Guest charges will be charged, and must be paid by the member player being substituted.

## PRACTICE

- Subject to availability of players, practice games will be six chukkers and scheduled on Tuesday, Wednesday, Thursday and Sunday mornings, with an occasional afternoon practice on weekdays.
- Each day a game schedule will be posted on the board in front of the club barns and recorded on the information line. The polo office will determine the schedule, field allocations, and playing times for all games. To schedule practice, players can sign up at the polo office or call 953-TIME. **All players must sign up by noon the day before.** Players are responsible for bringing their own red, white and blue practice shirts.
- Players must be on time for all games. Player tardiness at any scheduled event will result in a fine of \$50 for each offense.
- **All players must sign a release prior to playing.**
- If a player substitutes another player without the polo office's knowledge, a fine will be imposed.

## USE OF FACILITY

The clubhouse, club barns, turn-out paddocks, exercise track, fields, arena and practice areas are reserved for the exclusive use of members with these exceptions:

- If a full playing member would like to have a guest practice in their place, they must have permission from the polo manager.
- **Grooms can practice once during the week on their employer's horses, if their employer is out of town.** The groom must be a paid member of the U.S.P.A. and sign a release before practicing.
- **All** non-members who want to try a horse for purchase must check in at the polo office prior to riding. They must be a member of the U.S.P.A. and pay \$50.00 per chukker.
- **Members must notify the polo office in advance of any non-member using the facilities and should understand that this is a privilege that can be revoked, if abused.**
- **Members are responsible to have all guests sign a release. The release must be on file at the polo office before riding.**

Sarasota Polo Club may invite, under special circumstances, visiting teams or players to participate in any league or tournaments without the membership rules applying. Visiting teams will be subject to the team daily rate.

## POLO LESSONS

- Lessons are given **ONLY** by approved Sarasota Polo Club instructors
- All instructors are insured through the Polo Club.
- The polo office must be notified of all lessons.

## CLUBHOUSE

- The Sarasota Polo Club opens the clubhouse to all members and their guests every Sunday at 12:00 pm during the polo season.
- The clubhouse is available at no charge to members who are interested in hosting parties or barbecues for the entire club. For a nominal fee, members may also use the clubhouse for private affairs.

## PAVILION

- The pavilion on Field #1 is often rented during the polo season to sponsors and their guests. We ask that members use the clubhouse and field side for game viewing on those Sundays.

## TRASH

Please pick up bottles, cans, **tail tape** and trash in your trailer area after each game and instruct your grooms to assist in keeping these areas clean. Please be sure you take your trash with you or put it in trash cans.

## DOGS

Dogs remain a major problem at the club.

- **All dogs must be on a leash at all times on Sarasota Polo Club property.** A \$50.00 fine will be imposed to the owner for the first offense and will double for each offense thereafter. All fines must be paid before the player's next game or practice.
- Absolutely no dogs in residence in the barn area. This will be strictly enforced.
- No dogs are allowed on the exercise track or on any bridle paths.
- Dogs are not allowed in the clubhouse.
- Do not tie dogs outside the clubhouse.



**Season of 2010**

**Player Handbook  
Rules & Regulations**